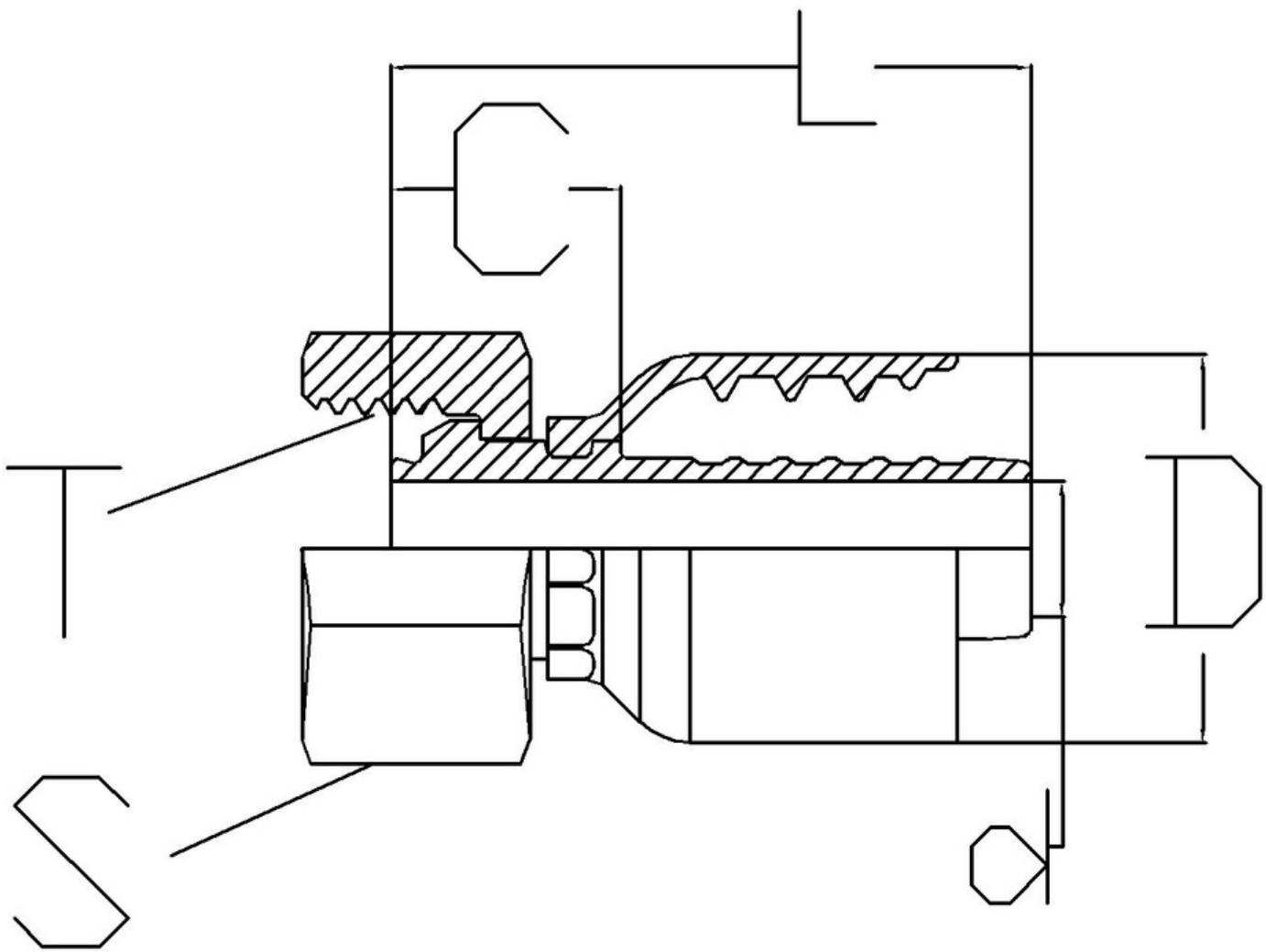


Standard - ISO 8434-6
Cone - 60°
O- Ring - NBR**
Used for hose type -
 SAE 100 R1, R2, R16, R17,
 R19, R7*, R6*, R4*, TEFLON*



DESCRIPTION	HOSE ID (DASH)	HOSE ID (inch)	Thread (T)	S	L	C	d	D
HW-0402-FB	4	1/4	1/8-28BSP	14	46	17	4	23
HW-0404-FB	4	1/4	1/4-19BSP	19	45	16	4	23
HW-0404-FBO	4	1/4	1/4-19BSP	19	45	16	4	23
HW-0406-FBO	4	1/4	3/8-19BSP	22	46	17	4	23
HW-0506-FBO	5	5/16	3/8-19BSP	22	46	12	5	25
HW-0606-FB	6	3/8	3/8-19BSP	22	45	16	7	27
HW-0606-FBO	6	3/8	3/8-19BSP	22	45	16	7	27
HW-0608-FBO	6	3/8	1/2-14BSP	27	46	17	7	27
HW-0808-FB	8	1/2	1/2-14BSP	27	45	17	9	30
HW-0808-FBO	8	1/2	1/2-14BSP	27	45	17	9	30
HW-0810-FBO	8	1/2	5/8-14BSP	30	46	17	9	30
HW-0812-FBO	8	1/2	3/4-14BSP	32	48	19	10	30
HW-1010-FB	10	5/8	5/8-14BSP	30	51	18	12	32
HW-1010-FBO	10	5/8	5/8-14BSP	30	51	18	12	32
HW-1012-FBO	10	5/8	3/4-14BSP	32	54	21	13	32
HW-1212-FB	12	3/4	3/4-14BSP	32	66	23	14	40
HW-1216-FBO	12	3/4	1-11BSP	41	67	23	15	40
HW-1616-FB	16	1	1-11BSP	41	67	16	21	50
HW-1616-FBO	16	1	1-11BSP	41	67	16	21	50
HW-1620-FB	16	1	1.1/4-11BSP	50	66	23	22	50
HW-2020-FB	20	1 -1/4	1.1/4-11BSP	50	99	40	27	60
HW-2024-FB	20	1 -1/4	1.1/2-11BSP	55	119	48	26	60
HW-2424-FB	24	1 -1/2	1.1/2-11BSP	55	119	45	32	72
HW-2432-FB	24	1 -1/2	2-11BSP	70	122	49	32	72
HW-3232-FB	32	2	2-11BSP	70	151	59	43	85
HW-3240-FB-SKIVE	32	2	2.1/2-11BSP	85	92	31.5	42	73

* To order fittings for R6, R7, R4 and Teflon hose, mention the hose type with part number
 ** If part number contains FBO, the fitting is with O-Ring and if it contains FB, it is without O-Ring