

Flange Code 62 Straight

6 Spiral Fittings

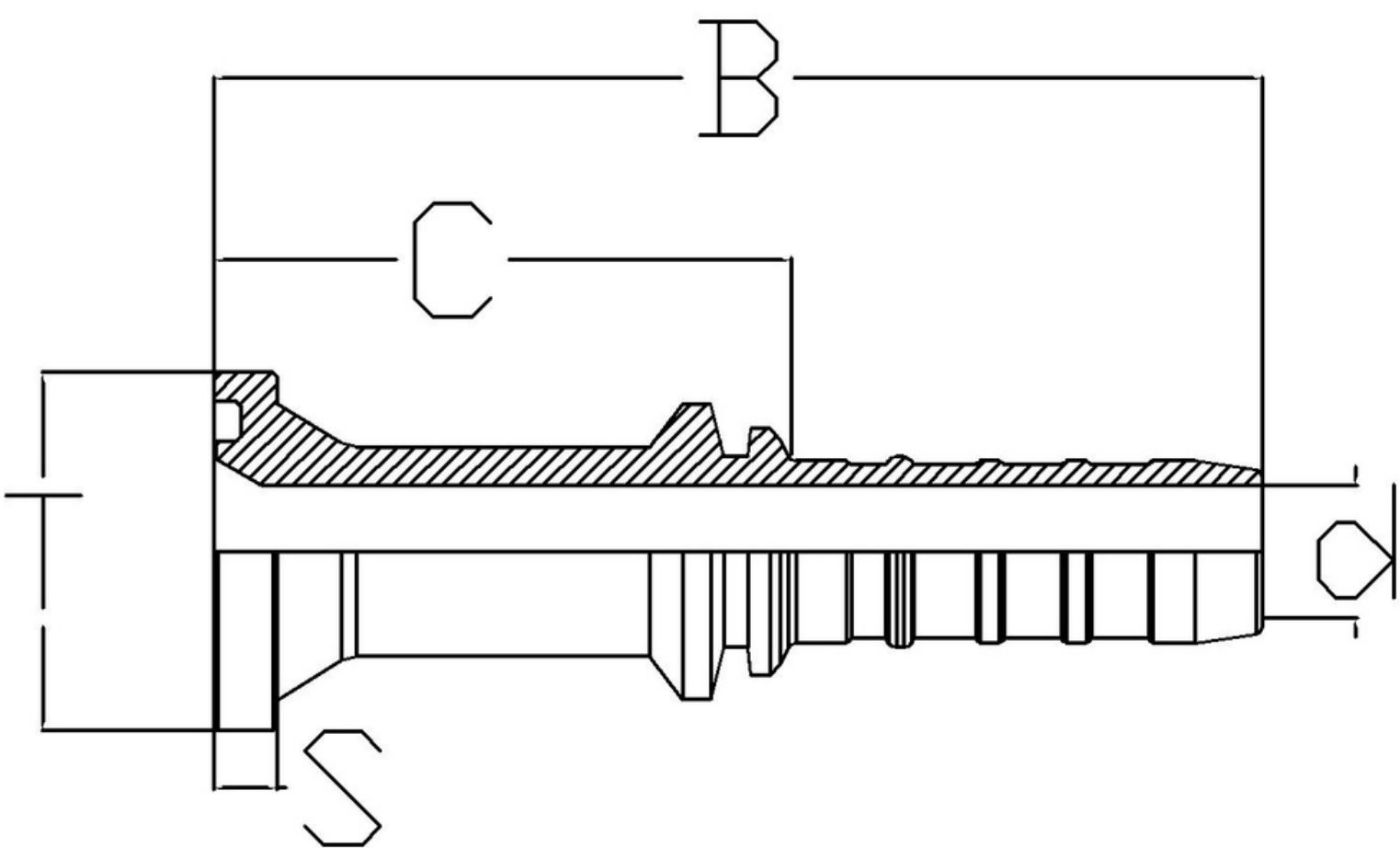
Standard - SAE 6162-1

6000 PSI CODE 62

O RING - NBR*

Used for hose type -

6 SPIRAL HOSES, R13, R15



Description	HOSE ID (Dash)	HOSE ID (inch)	Thread (T)	S	L	C	d	D
HS-2016-FL6-6SP	20	1 - 1/4	47.6	10	134	62	26	68
HS-2020-FL6-6SP	20	1 - 1/4	54	11	147	76	26	68
HS-2420-FL6-6SP	24	1 - 1/2	54	11	165	75	32	76
HS-2424-FL6-6SP	24	1 - 1/2	63.5	13	195	100	33	76
HS-2432-FL6-6SP	24	1 - 1/2	79.4	13	175	80	32	76
HS-3232-FL6-6SP	32	2	79.4	13	250	136	44	90

* O-Ring is not a part of the flange, it is ordered and invoiced separately

Flange Code 62 90/45 degree bend

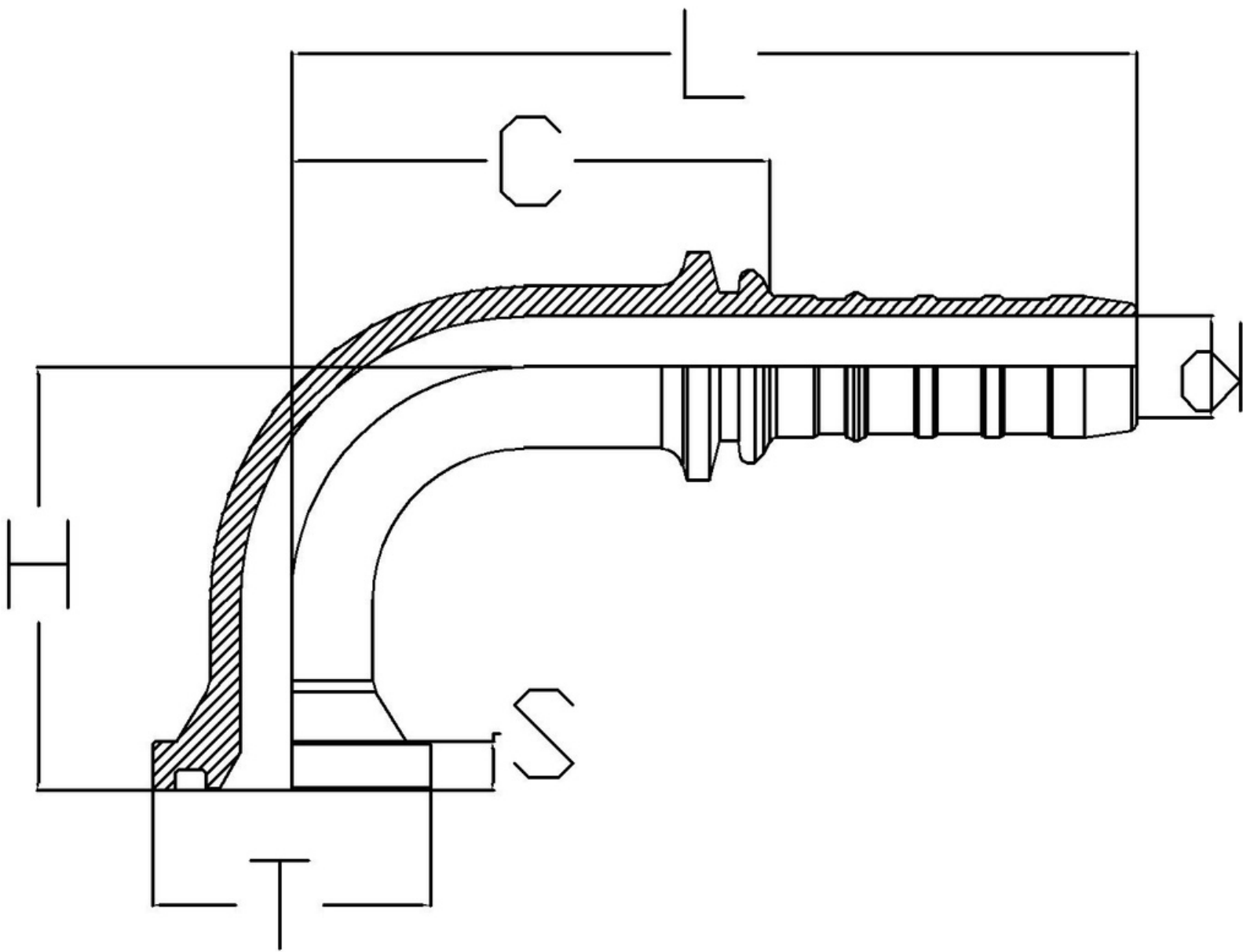
Standard - SAE 6162-1

6000 PSI CODE 62

O RING - NBR*

Used for hose type -

6 SPIRAL HOSES, R13, R15



Description	HOSE ID (Dash)	HOSE ID (inch)	Thread (T)	S	L	C	d	D	H
HS-2016-FL6-90-85-6SP	20	1 - 1/4	47.6	10	160	90	21	68	85
HS-2020-FL6-90-120-6SP	20	1 - 1/4	54	11	165	95	26	68	120
HS-2020-FL6-90-150-6SP	20	1 - 1/4	54	11	165	95	26	68	150
HS-2020-FL6-90-180-6SP	20	1 - 1/4	54	11	180	110	26	68	180
HS-2020-FL6-90-95-6SP	20	1 - 1/4	54	11	170	95	26	68	95
HS-2420-FL6-90-95-6SP	24	1 - 1/2	54	11	190	95	26	76	95
HS-2424-FL6-90-100-6SP	24	1 - 1/2	63.5	13	220	120	28	76	100
HS-2432-FL6-90-110-6SP	24	1 - 1/2	79.4	13	235	130	27	76	110
HS-3232-FL6-90-140-6SP	32	2	79.4	13	285	180	43	90	140
HS-2020-FL6-45-40-6SP	20	1 - 1/4	54.0	11	195	120	26	62	40
HS-2424-FL6-45-46-6SP	24	1 - 1/2	63.5	13	230	150	31	76	46
HS-3232-FL6-45-50-6SP	32	2	79.4	13	275	160	42	90	50

* O-Ring is not a part of the flange, it is ordered and invoiced separately

