

JIS Female straight

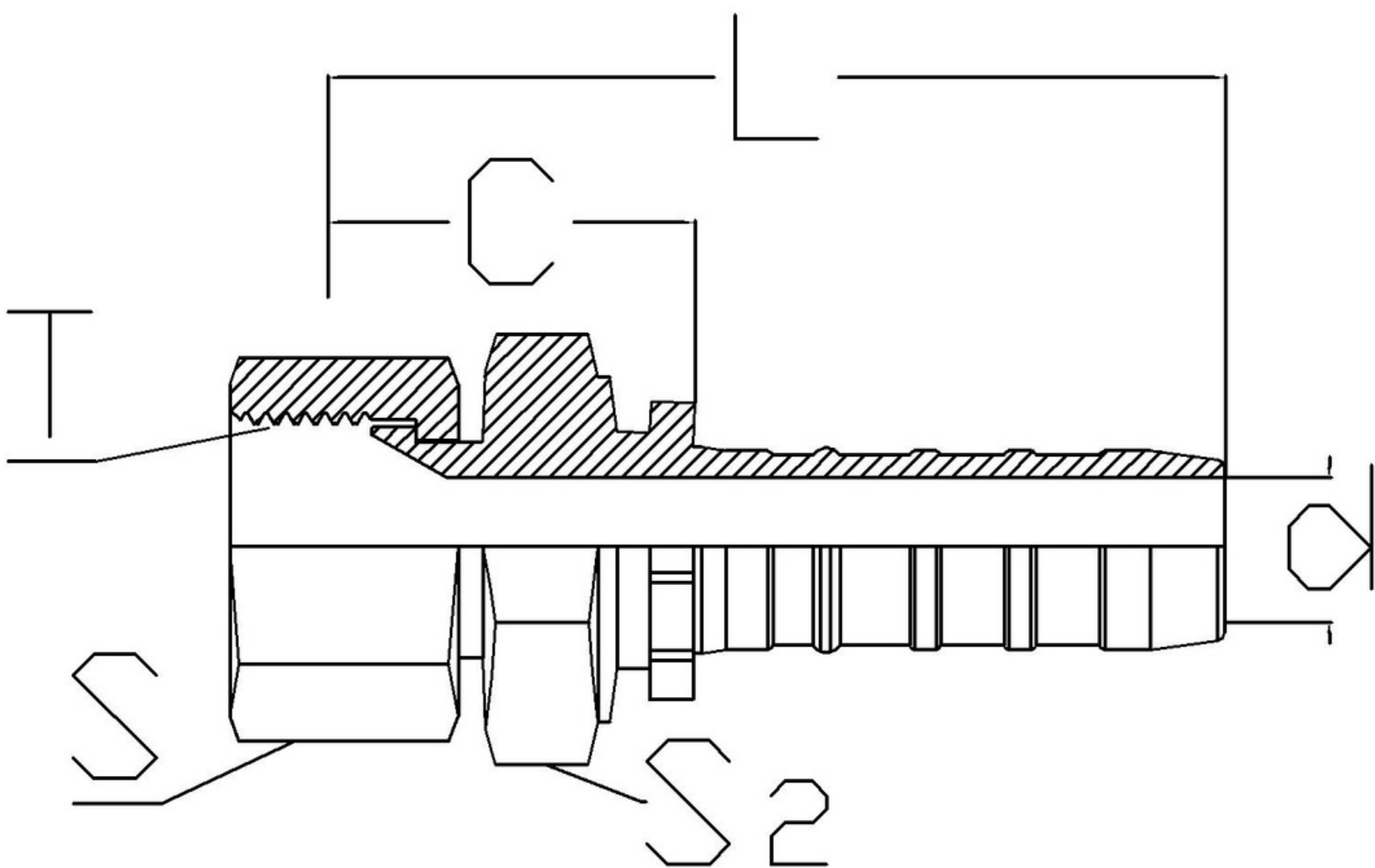
4 Spiral Fittings

Standard - BSP Inverted C-Type

Cone - 60°

Used for hose type -

4SP,4SH,R12, R13*, R15*



DESCRIPTION	HOSE ID (DASH)	HOSE ID (inch)	Thread (T)	S	L	C	d	D	S2
HS-0808-FBJ	8	1/2	1/2-14BSP	27	63	26	9	34	27
HS-1616-FBJ	16	1	1-11BSP	41	95	38	18	52	41
HS-1620-FBJ	16	1	1.1/4-11BSP	50	99	43	18	52	41
HS-3232-FBJ	32	2	2-11BSP	70	146	56	43	85	70

* R13, R15 are only upto 1" size (for higher sizes go to section 6 spiral fittings)

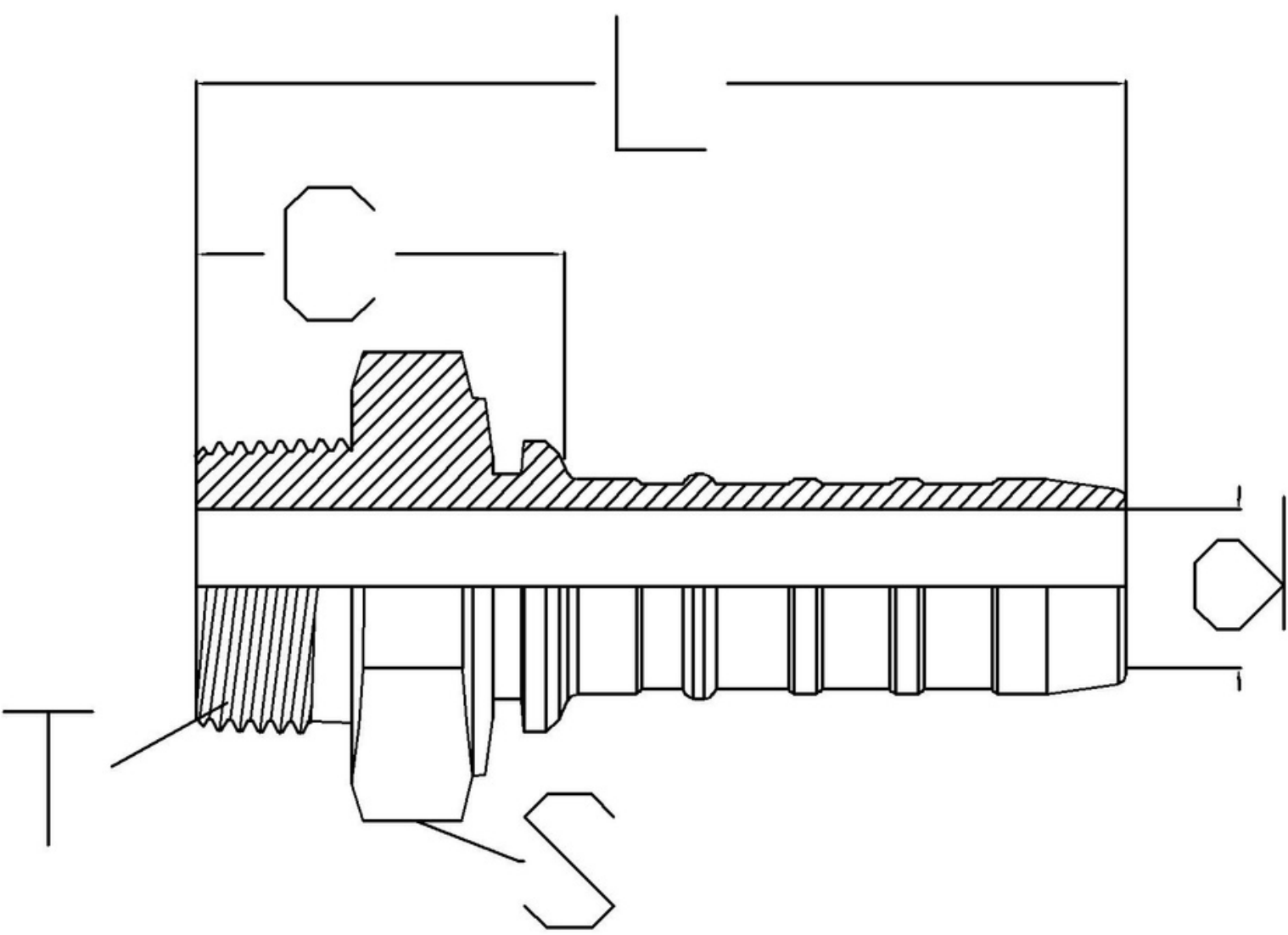
NPT Male Straight

Standard - ANSI/ASME B1.20.1

Cone - 60°

Used for hose type:

4SP, 4SH, R12, R13*, R15*



DESCRIPTION	HOSE ID (DASH)	HOSE ID (inch)	Thread (T)	S	L	C	d	D
HS-0808-MNPT	8	1/2	1/2 – 14	24	72	35	9	34
HS-1212-MNPT	12	3/4	3/4 – 14	27	85	35	15	46
HS-1616-MNPT	16	1	1 – 11.1/2	36	103	46	21	52
HS-2020-MNPT	20	1 - 1/4	1.1/4 – 11.1/2	46	121	50	26	62
HS-2424-MNPT	24	1 - 1/2	1.1/2 – 11.1/2	50	125	51	32	72
HS-3232-MNPT	32	2	2 – 11.1/2	65	140	54	42	85

* R13, R15 are only upto 1" size (for higher sizes go to section 6 spiral fittings)