

Flange Code 61 bend 90 degree

4 Spiral Fittings

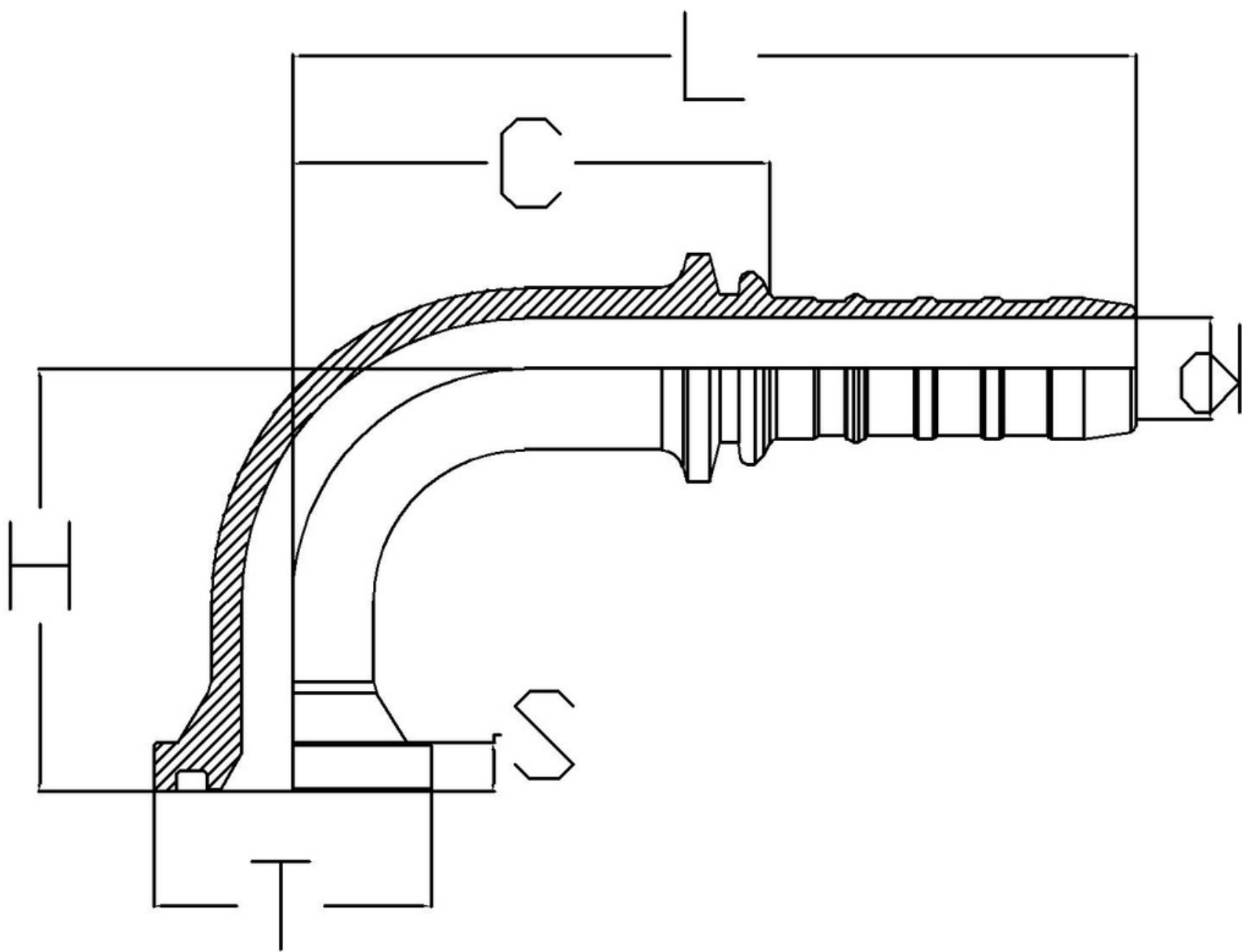
Standard - SAE 6162-1

3000 PSI CODE 61

O RING - NBR**

Used for hose type -

4SP,4SH, R12, R13*, R15*



DESCRIPTION	HOSE ID (DASH)	HOSE ID (inch)	Thread (T)	S	L	C	d	D	H
HS-0808-FL3-90-100	8	1/2	30.2	7	88	52	9	34	100
HS-0808-FL3-90-140	8	1/2	30.2	7	88	52	9	34	140
HS-0808-FL3-90-45	8	1/2	30.2	7	85	49	9	34	45
HS-0812-FL3-90-50	8	1/2	38.1	7	90	54	10	34	50
HS-1008-FL3-90-45	10	5/8	30.2	7	111	60	10	42	45
HS-1008-FL3-90-65	10	5/8	30.2	7	111	60	10	42	65
HS-1008-FL3-90-120	10	5/8	30.2	7	111	60	10	42	120
HS-1008-FL3-90-150	10	5/8	30.2	7	111	60	10	42	150
HS-1012-FL3-90-60	10	5/8	38.1	7	130	79	12	42	60
HS-1208-FL3-90-120	12	3/4	30.2	7	120	70	12	46	120
HS-1212-FL3-90-65	12	3/4	38.1	7	120	70	15	46	65
HS-1212-FL3-90-100	12	3/4	38.1	7	120	70	15	46	100
HS-1212-FL3-90-130	12	3/4	38.1	7	120	70	15	46	130
HS-1212-FL3-90-143	12	3/4	38.1	7	120	70	15	46	143
HS-1216-FL3-90-70	12	3/4	44.5	8	126	76	15	46	70
HS-1216-FL3-90-110	12	3/4	44.5	8	126	76	15	46	110
HS-1216-FL3-90-130	12	3/4	44.5	8	126	76	15	46	130
HS-1216-FL3-90-150	12	3/4	44.5	8	126	76	15	46	150
HS-1612-FL3-90-65	16	1	38.1	7	128	72	15	52	65
HS-1612-FL3-90-110	16	1	38.1	7	128	72	15	52	110
HS-1616-FL3-90-80	16	1	44.5	8	147	93	21	52	80
HS-1616-FL3-90-115	16	1	44.5	8	147	93	21	52	115
HS-1616-FL3-90-130	16	1	44.5	8	147	93	21	52	130
HS-1616-FL3-90-160	16	1	44.5	8	147	93	21	52	160
HS-1620-FL3-90-85	16	1	50.8	8	130	75	22	52	85
HS-2016-FL3-90-80	20	1 - 1/4	44.5	8	160	85	21	62	80
HS-2020-FL3-90-90	20	1 - 1/4	50.8	8	160	90	25	62	90
HS-2020-FL3-90-95	20	1 - 1/4	50.8	8	170	98	25	62	95
HS-2024-FL3-90-100	20	1 - 1/4	60.3	8	190	115	27	62	100
HS-2424-FL3-90-110	24	1 - 1/2	60.3	8	195	115	28	72	110
HS-2432-FL3-90-100	24	1 - 1/2	71.4	10	200	125	29	72	100
HS-3224-FL3-90-110	32	2	60.3	8	220	125	28	85	110
HS-3232-FL3-90-130	32	2	71.4	10	255	160	38	85	130

** O-Ring is not a part of the flange, it is ordered and invoiced separately.
* R13, R15 are only upto 1" size (for higher sizes go to section 6 spiral fittings)