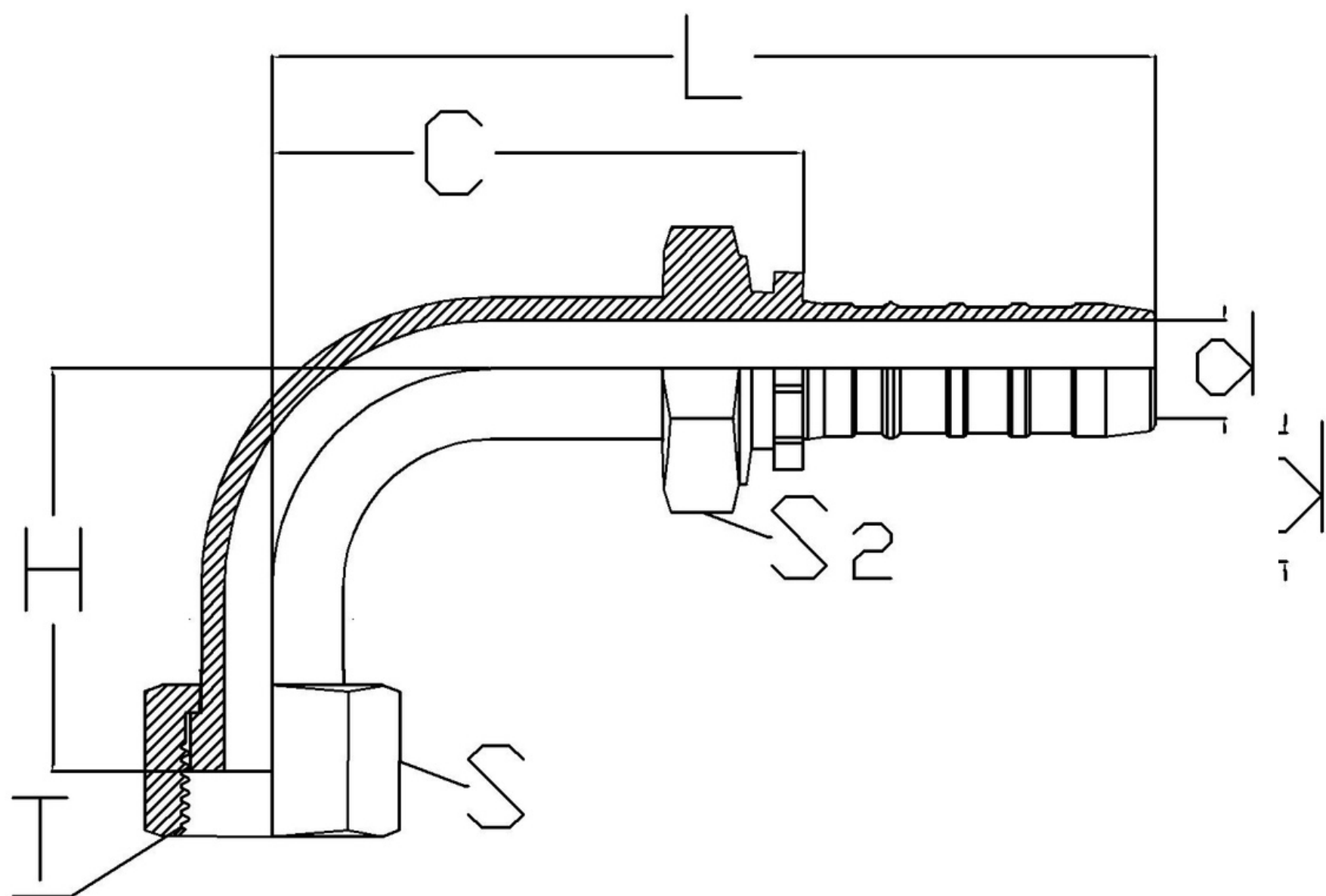


ORFS Female 90 degree bend

4 Spiral Fittings

Standard - ISO 8434-3
Cone - Flat face
Used for hose type -
4SP, 4SH, R12, R13*, R15*



DESCRIPTION	HOSE ID (DASH)	HOSE ID (inch)	Thread (T)	S	L	C	d	D	H	S2
HS-0606-FO-90-30	6	3/8	11/16-16UN	22	80	42	7	32	30	19
HS-0808-FO-90-40	8	1/2	13/16-16UN	24	79	44	8	34	40	27
HS-0810-FO-90-40	8	1/2	1-14UN	27	91	53	8	34	40	27
HS-1008-FO-90-45	10	5/8	13/16-16UN	24	112	61	9	42	45	30
HS-1008-FO-90-100	10	5/8	13/16-16UN	24	112	61	9	42	100	30
HS-1010-FO-90-40	10	5/8	1-14UN	27	105	54	10	42	40	30
HS-1010-FO-90-70	10	5/8	1-14UN	27	105	54	10	42	70	30
HS-1012-FO-90-40	10	5/8	1.3/16 12UN	36	129	78	11	42	40	30
HS-1012-FO-90-95	10	5/8	1.3/16 12UN	36	129	78	11	42	95	30
HS-1212-FO-90-55	12	3/4	1.3/16 12UN	36	125	75	15	46	55	32
HS-1212-FO-90-105	12	3/4	1.3/16 12UN	36	125	75	15	46	105	32
HS-1212-FO-90-140	12	3/4	1.3/16 12UN	36	125	75	15	46	140	32
HS-1216-FO-90-60	12	3/4	1.7/16 12UN	41	127	75	15	46	60	32
HS-1216-FO-90-70	12	3/4	1.7/16 12UN	41	127	75	15	46	70	32
HS-1216-FO-90-115	12	3/4	1.7/16 12UN	41	127	75	15	46	115	32
HS-1616-FO-90-65	16	1	1.7/16 12UN	41	144	84	20	52	65	41
HS-1616-FO-90-120	16	1	1.7/16 12UN	41	144	84	20	52	120	41
HS-1620-FO-90-70	16	1	1.11/16 12UN	50	145	91	21	52	70	41
HS-2020-FO-90-90	20	1 - 1/4	1.11/16 12UN	50	175	115	23	62	90	50
HS-2424-FO-90-100	24	1 - 1/2	2-12UN	60	200	130	28	72	100	55

** If part number contains FBO, the fitting is with O-Ring and if it contains FB, it is without O-Ring
* R13, R15 are only upto 1" size (for higher sizes go to section 6 spiral fittings)