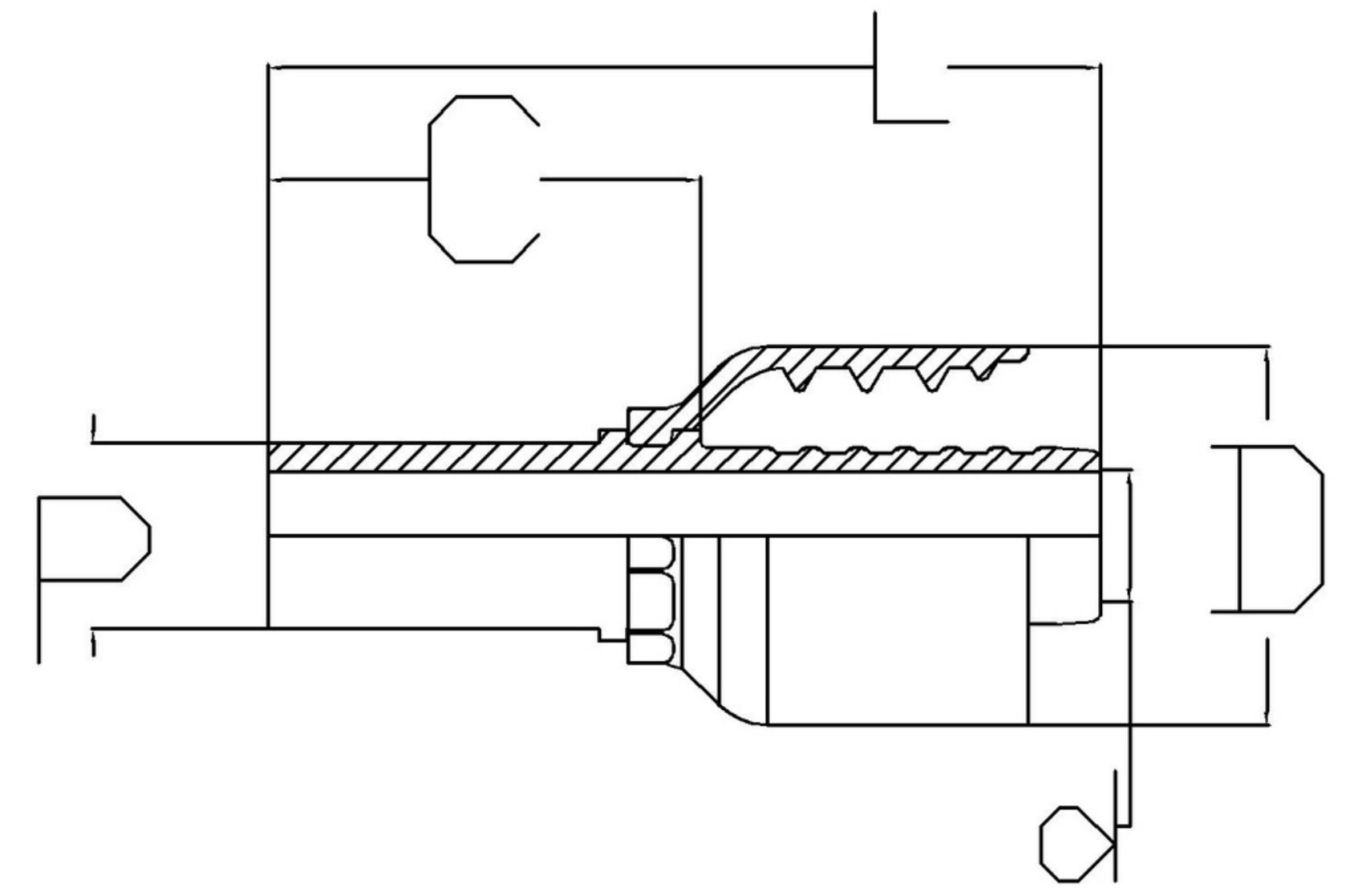


Din Metric Stand Pipe

Standard - Din EN ISO 8434-1

Used for hose type -

SAE 100 R1, R2, R16, R17,
R19, R7*, R6*, R4*, TEFLON*



DESCRIPTION	HOSE ID (DASH)	HOSE ID (inch)	Thread (T)	S	L	C	d	D
HW-0406-PDL	4	1/4	12X1.5	6	70	41	4	23
HW-0510-PDL	5	5/16	16X1.5	10	59	30	5	25
HW-0612-PDL	6	3/8	18X1.5	12	62	33	7	27
HW-0815-PDL	8	1/2	22X1.5	15	71	42	10	30
HW-1218-PDL	12	3/4	26X1.5	18	77	33	18	40
HW-1222-PDL	12	3/4	30X2.0	22	91	47	15	40

* To order fittings for R6, R7, R4 and Teflon hose, mention the hose type with part number