

METRIC Female 90 degree bend with O-Ring

Din Metric 24° Cone Female bend 90°

Standard - Din EN ISO 8434-1

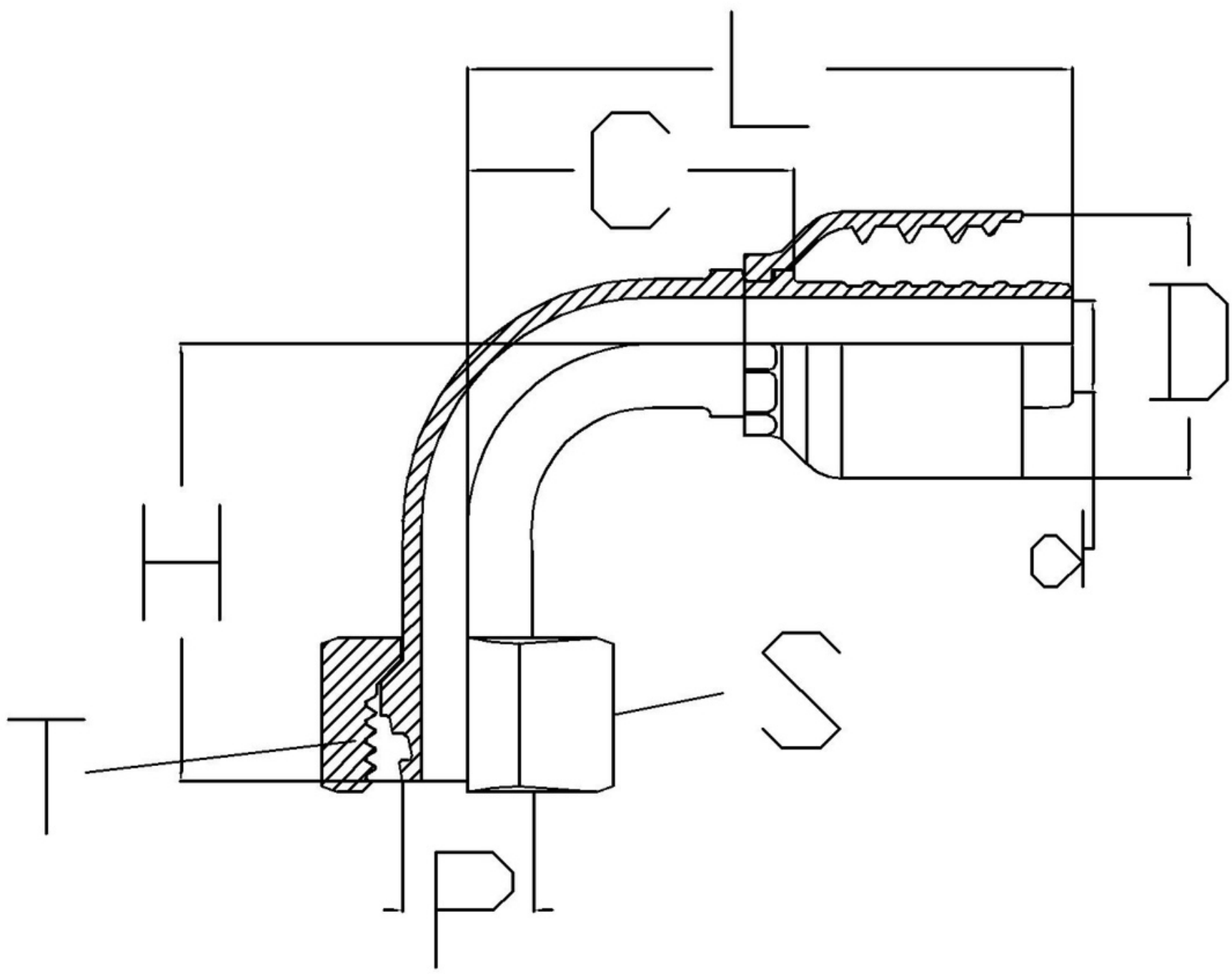
O-ring - NBR

Light series - FDLO

Heavy series - FDHO

Used for hose type -

SAE 100 R1, R2, R16, R17,
R19, R7*, R6*, R4*, TEFLON*



DESCRIPTION	HOSE ID (DASH)	HOSE ID (inch)	Pipe OD (P)	Thread (T)	S	L	C	d	D	H
HW-0406-FDH-90-31	4	1/4	06H	14X1.5	17	58	29	4	23	31
HW-0406-FDL-90-35	4	1/4	06L	12X1.5	14	59	30	4	23	35
HW-0408-FDHO-90-33	4	1/4	08H	16X1.5	19	57	28	4	23	33
HW-0408-FDLO-90-33	4	1/4	08L	14X1.5	17	59	30	4	23	33
HW-0408-FDLO-90-55	4	1/4	08L	14X1.5	17	59	30	4	23	55
HW-0410-FDHO-90-32	4	1/4	10H	18X1.5	22	57	28	4	23	32
HW-0410-FDLO-90-33	4	1/4	10L	16X1.5	19	58	29	4	23	33
HW-0510-FDHO-90-36	5	5/16	10H	18X1.5	22	60	30	5	25	36
HW-0510-FDLO-90-32	5	5/16	10L	16X1.5	19	61	34	5	25	32
HW-0512-FDHO-90-43	5	5/16	12H	20X1.5	24	71	41	5	25	43
HW-0512-FDLO-90-43	5	5/16	12L	18X1.5	22	69	40	5	25	43
HW-0610-FDHO-90-37	6	3/8	10H	18X1.5	22	64	37	7	27	37
HW-0610-FDLO-90-37	6	3/8	10L	16X1.5	19	64	37	7	27	37
HW-0612-FDHO-90-37	6	3/8	12H	20X1.5	24	62	33	7	27	37
HW-0612-FDLO-90-37	6	3/8	12L	18X1.5	22	63	34	7	27	37
HW-0615-FDLO-90-35	6	3/8	15L	22X1.5	27	61	32	6	27	35
HW-0616-FDHO-90-40	6	3/8	16H	24X1.5	30	61	32	7	27	40
HW-0812-FDHO-90-48	8	1/2	12H	20X1.5	24	72	44	9	30	48
HW-0812-FDLO-90-47	8	1/2	12L	18X1.5	22	73	44	9	30	47
HW-0815-FDLO-90-43	8	1/2	15L	22X1.5	27	75	46	9	30	43
HW-0816-FDHO-90-44	8	1/2	16H	24X1.5	30	75	46	9	30	44
HW-0818-FDLO-90-45	8	1/2	18L	26X1.5	32	74	45	9	30	45
HW-1018-FDLO-90-52	10	5/8	18L	26X1.5	32	85	53	13	32	52
HW-1020-FDHO-90-56	10	5/8	20H	30X2.0	36	85	53	12	32	56
HW-1022-FDLO-90-60	12	3/4	22L	30X2.0	36	86	53	9	32	60
HW-1218-FDLO-90-59	12	3/4	18L	26X1.5	32	100	59	15	40	59
HW-1220-FDHO-90-65	12	3/4	20H	30X2.0	36	105	57	15	40	65
HW-1222-FDLO-90-58	12	3/4	22L	30X2.0	36	107	64	14	40	58
HW-1225-FDHO-90-65	12	3/4	25H	36X2.0	41	101	58	14	40	65
HW-1625-FDHO-90-73	16	1	25H	36X2.0	41	122	79	20	50	73
HW-1628-FDLO-90-73	16	1	28L	36X2.0	41	125	81	21	50	73
HW-1630-FDHO-90-77	16	1	30H	42X2.0	50	116	75	20	50	77
HW-2035-FDLO-90-90	20	1 - 1/4	35L	45X2.0	50	180	110	26	61	90
HW-2038-FDHO-90-85	20	1 - 1/4	38H	52X2.0	60	180	110	23	61	85
HW-2442-FDLO-90-120	24	1 - 1/2	42L	52X2.0	60	200	115	31	68	120

* To order fittings for R6, R7, R4 and Teflon hose, mention the hose type with part number