

## ORFS Male Straight

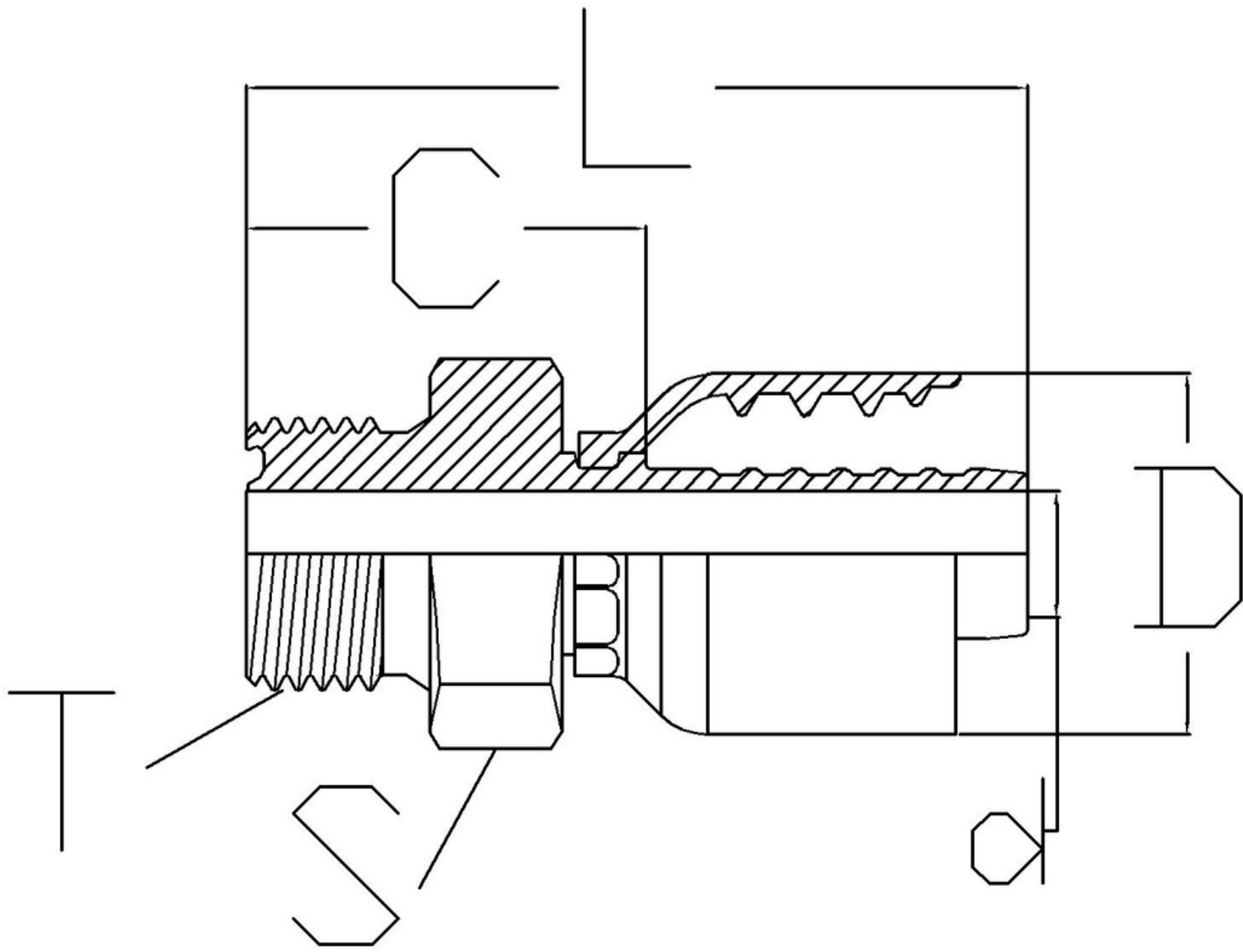
## Wire Braid Fittings

**Standard** - ISO 8434-3

**Cone** - Flat face

**Used for hose type** -

SAE 100 R1, R2, R16, R17,  
R19, R7\*, R6\*, R4\*, TEFLON\*



DESCRIPTION	HOSE ID (DASH)	HOSE ID (inch)	Thread (T)	S	L	C	d	D
HW-0404-MO	4	1/4	9/16-18UN	17	54	26	4	23
HW-0606-MO	6	3/8	11/16-16UN	19	56	27	5	27
HW-0608-MO	8	1/2	13/16-16UN	22	58	29	7	27
HW-0808-MO	8	1/2	13/16-16UN	22	59	28	10	30
HW-0810-MO	8	1/2	1-14UN	27	64	35	10	30
HW-0812-MO	8	1/2	1.3/16 12UN	32	64	34	10	30
HW-1012-MO	10	5/8	1.3/16 12UN	32	69	36	12	32
HW-1212-MO	12	3/4	1.3/16 12UN	32	77	32	14	40
HW-1616-MO	16	1	1.7/16 12UN	38	81	37	21	50

\* To order fittings for R6, R7, R4 and Teflon hose, mention the hose type with part number

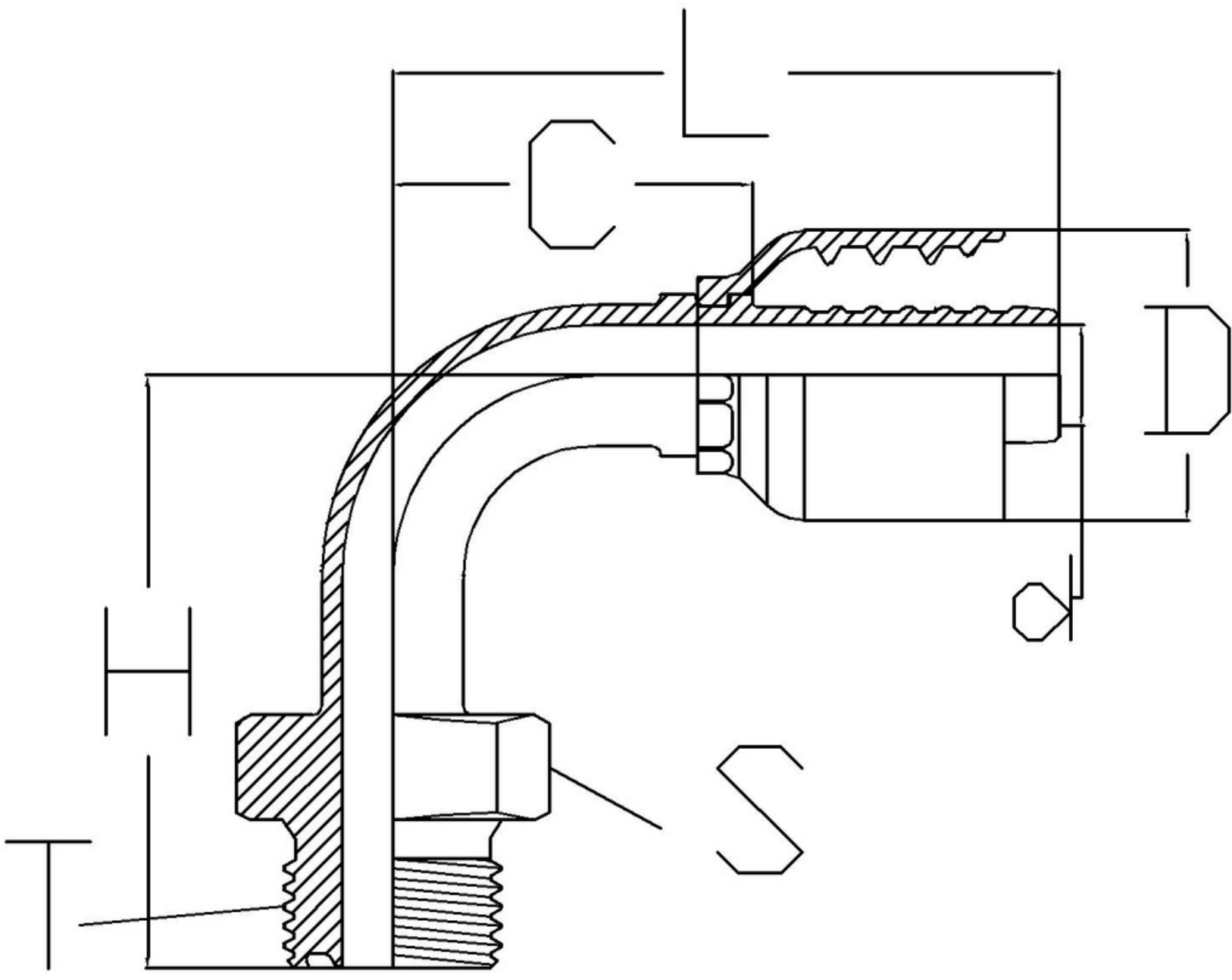
## ORFS Male 90 degree bend

**Standard** - ISO 8434-3

**Cone** - Flat face

**Used for hose type** -

SAE 100 R1, R2, R16, R17,  
R19, R7\*, R6\*, R4\*, TEFLON\*



DESCRIPTION	HOSE ID (DASH)	HOSE ID (inch)	Thread (T)	S	L	C	d	D	H
HW-0606-MO-90-45	6	3/8	11/16-16UN	19	60	30	7	27	45
HW-0606-MO-90-100	6	3/8	11/16-16UN	19	60	30	7	27	100
HW-0810-MO-90-109	8	1/2	1-14UN	27	69	38	9	30	109
HW-1012-MO-90-121-WELDING	10	5/8	1.3/16 12UN	36	85	51	13	32	121

\* To order fittings for R6, R7, R4 and Teflon hose, mention the hose type with part number