

## JIC Male straight

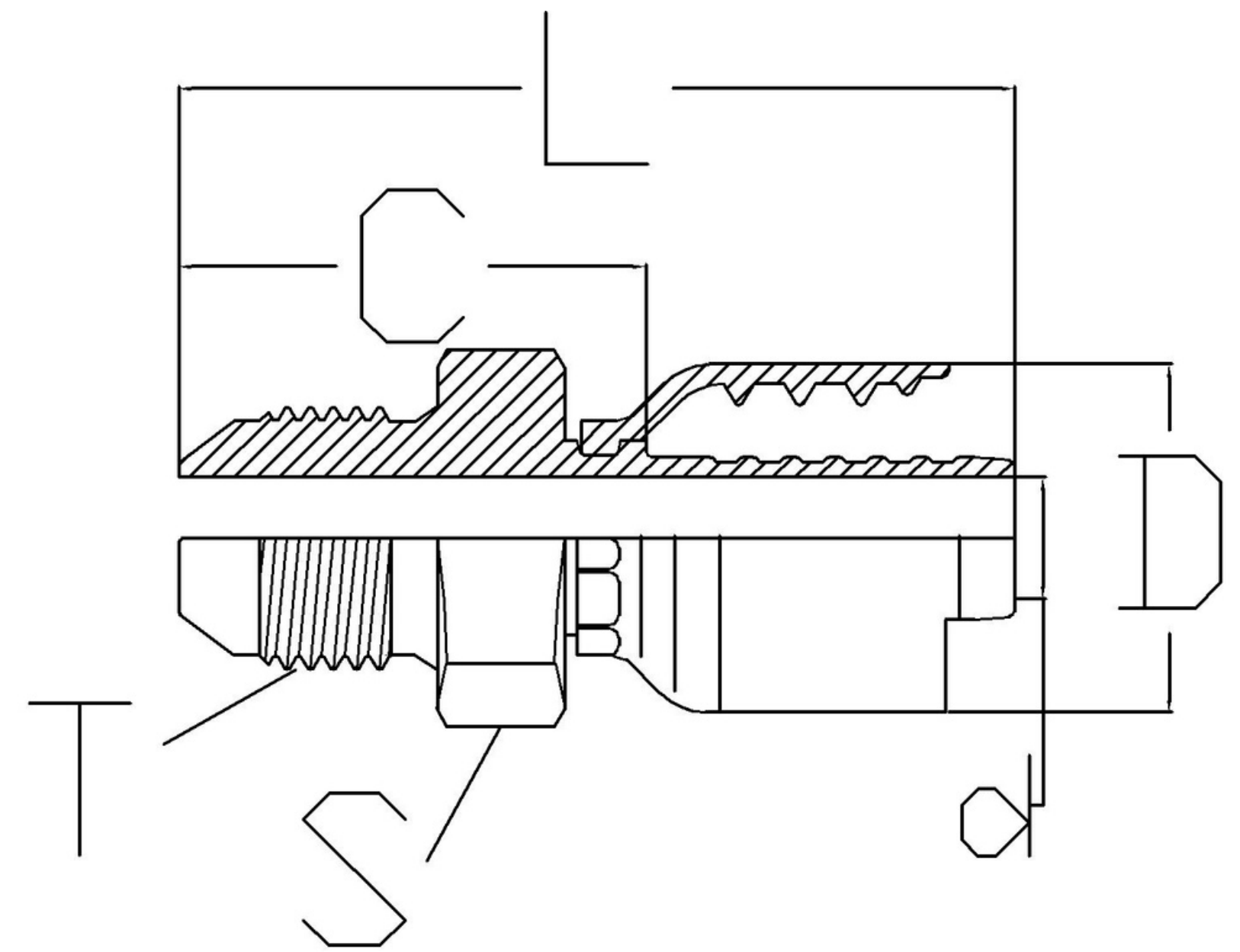
## Wire Braid Fittings

**Standard - ISO-8434-2**

**Cone - 37°**

**Used for hose type -**

SAE 100 R1, R2, R16, R17,  
R19, R7\*, R6\*, R4\*, TEFLON\*



| DESCRIPTION         | HOSE ID (DASH) | HOSE ID (inch) | Thread (T)  | S  | L  | C  | d  | D  |
|---------------------|----------------|----------------|-------------|----|----|----|----|----|
| HW-0404-MJ          | 4              | 1/4            | 7/16-20UN   | 17 | 59 | 29 | 4  | 23 |
| HW-0406-MJ          | 4              | 1/4            | 9/16-18UN   | 17 | 57 | 27 | 7  | 23 |
| HW-0606-MJ          | 6              | 3/8            | 9/16-18UN   | 16 | 57 | 31 | 7  | 27 |
| HW-0606-MJ-BULKHEAD | 6              | 3/8            | 9/16-18UN   | 16 | 75 | 46 | 6  | 27 |
| HW-0608-MJ          | 6              | 3/8            | 3/4-16UN    | 22 | 64 | 35 | 7  | 25 |
| HW-0808-MJ          | 8              | 1/2            | 3/4-16UN    | 22 | 64 | 35 | 9  | 30 |
| HW-0810-MJ          | 8              | 1/2            | 7/8-14UN    | 24 | 64 | 35 | 9  | 30 |
| HW-1010-MJ          | 10             | 5/8            | 7/8-14UN    | 24 | 69 | 36 | 12 | 32 |
| HW-1212-MJ          | 12             | 3/4            | 1.1/16-12UN | 32 | 82 | 38 | 14 | 40 |
| HW-1616-MJ          | 16             | 1              | 1.5/16-12UN | 38 | 84 | 40 | 21 | 50 |

\* To order fittings for R6, R7, R4 and Teflon hose, mention the hose type with part number