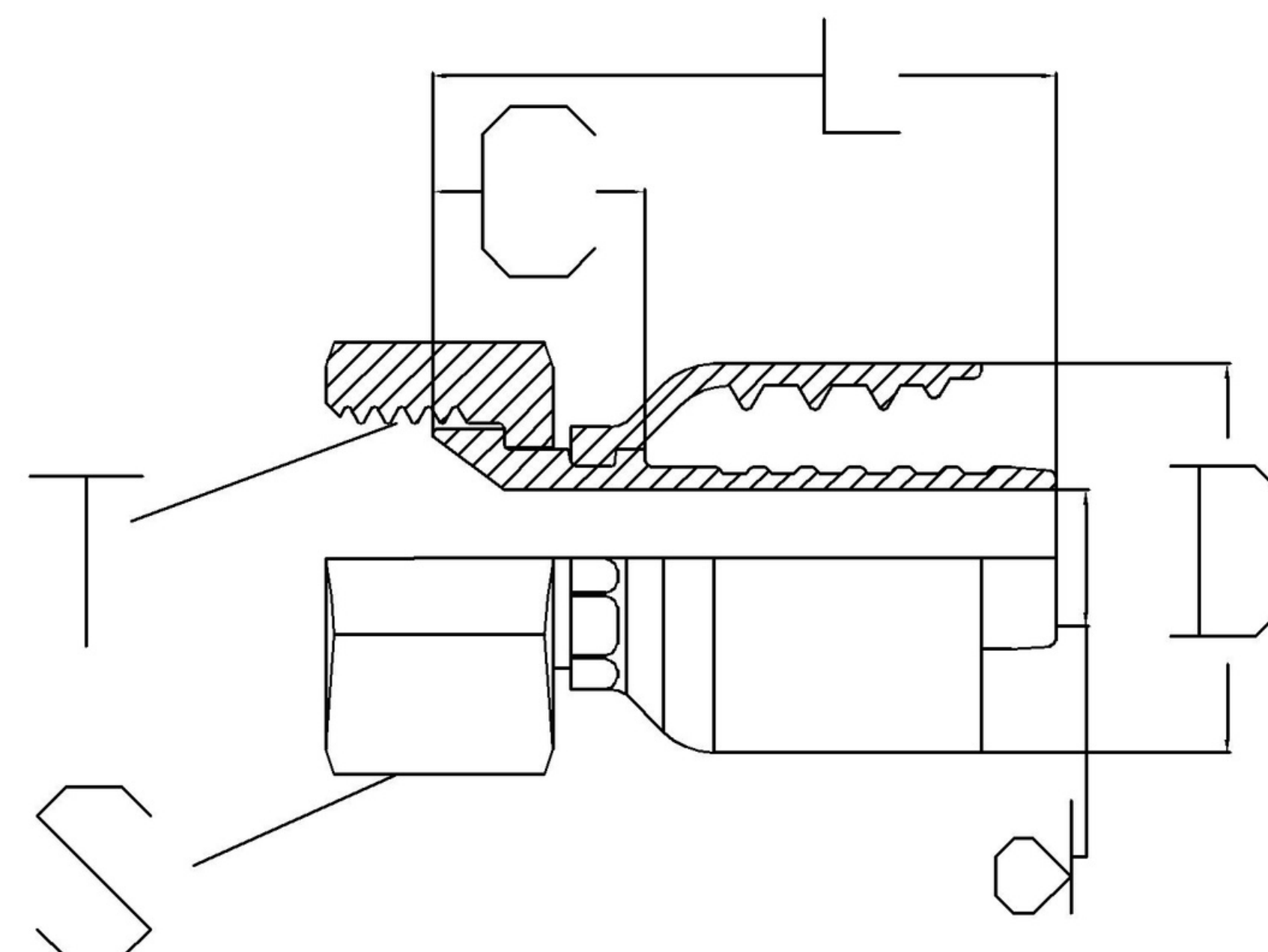


Standard - ISO-8434-2

Cone - 37°

Used for hose type -

SAE 100 R1, R2, R16, R17,
R19, R7*, R6*, R4*, TEFLON*



DESCRIPTION	HOSE ID (DASH)	HOSE ID (inch)	Thread (T)	S	L	C	d	D
HW-0404-FJ	4	1/4	7/16-20UN	17	43	14	4	23
HW-0405-FJ	4	1/4	1/2-20UN	17	46	17	4	23
HW-0406-FJ	4	1/4	9/16-18UN	19	46	17	4	23
HW-0505-FJ	5	5/16	1/2-20UN	17	46	17	5	25
HW-0506-FJ	5	5/16	9/16-18UN	19	47	18	5	25
HW-0606-FJ	6	3/8	9/16-18UN	19	46	17	6	27
HW-0607-FJ	6	3/8	5/8-18UN	22	46	17	7	27
HW-0608-FJ	6	3/8	3/4-16UN	24	46	17	6	27
HW-0808-FJ	8	1/2	3/4-16UN	24	45	17	9	30
HW-0810-FJ	8	1/2	7/8-14UN	27	45	16	9	30
HW-1010-FJ	10	5/8	7/8-14UN	27	51	18	12	32
HW-1012-FJ	10	5/8	1.1/16-12UN	32	53	20	12	32
HW-1212-FJ	12	3/4	1.1/16-12UN	32	62	18	14	40
HW-1216-FJ	12	3/4	1.5/16-12UN	41	64	21	14	40
HW-1616-FJ	16	1	1.5/16-12UN	41	66	22	20	50
HW-1620-FJ	16	1	1.5/8-12UN	50	69	25	20	50
HW-2020-FJ	20	1 - 1/4	1.5/8-12UN	50	118	48	26	61
HW-2024-FJ	20	1 - 1/4	1.7/8-12UN	60	119	48	26	60
HW-2424-FJ	24	1 - 1/2	1.7/8-12UN	60	84	28	31	68
HW-2432-FJ	24	1 - 1/2	2.1/2-12UN	75	112	49	32	72
HW-3232-FJ	32	2	2.1/2-12UN	75	93	32	44	73

* To order fittings for R6, R7, R4 and Teflon hose, mention the hose type with part number