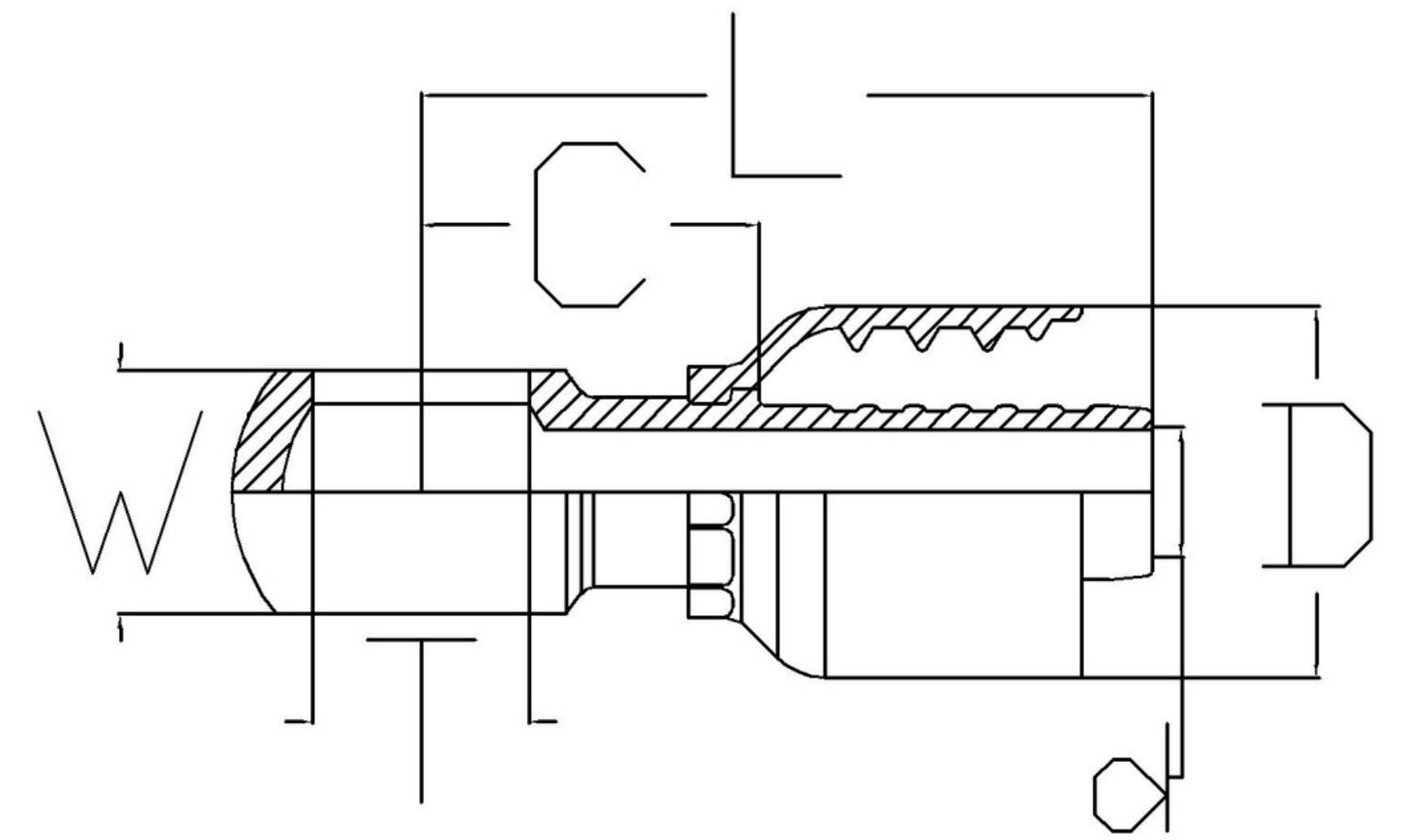


Standard - DIN-7642

Used for hose type -

SAE 100 R1, R2, R16, R17,
R19, R7*, R6*, R4*, TEFLON*



DESCRIPTION	Compatible METRIC Bolt	Compatible BSP Bolt	HOSE ID (DASH)	HOSE ID (inch)	TYPE	L	C	d	D	W
HW-0410-BJ	M10	1/8"	4	1/4	10 mm ID	52	24	4	23	10
HW-0412-BJ	M12		4	1/4	12 mm ID	55	25	4	23	12
HW-0412-BJO-W16	M12		4	1/4	12 mm ID	55	25	4	23	16
HW-0412-BJO-W20	M12		4	1/4	12 mm ID	55	25	4	23	20
HW-0412-BJO-W25	M12		4	1/4	12 mm ID	55	25	4	23	25
HW-0414-BJ	M14	1/4"	4	1/4	14 mm ID	58	40	4	23	14
HW-0416-BJO-W15	M16		4	1/4	16 mm ID	74	46	4	23	15
HW-0416-BJO-W21	M16		4	1/4	16 mm ID	74	46	4	23	21
HW-0512-BJ	M12		5	5/16	12 mm ID	58	28	5	25	12
HW-0514-BJ	M14	1/4"	5	5/16	14 mm ID	58	29	5	25	13,8
HW-0614-BJ	M14	1/4"	6	3/8	14 mm ID	58	29	7	27	14
HW-0616-BJ	M16		6	3/8	16 mm ID	63	35	7	27	15.9
HW-0618-BJ	M18	3/8"	6	3/8	18 mm ID	70	41	7	27	19.9
HW-0622-BJ	M21	1/2"	6	3/8	22 mm ID	72	45	7	27	25
HW-0816-BJ	M16		8	1/2	16 mm ID	59	31	9	30	16
HW-0818-BJ	M18	3/8"	8	1/2	18 mm ID	63	34	10	30	19.9
HW-0822-BJ	M22	1/2"	8	1/2	22 mm ID	65	34	9	30	25
HW-1227-BJ	M27	3/4"	12	3/4	27 mm ID	77	33	14	40	30
HW-1233-BJ	M33	1"	12	3/4	33 mm ID	90	47	14	40	33

* To order fittings for R6, R7, R4 and Teflon hose, mention the hose type with part number