

BSP Female Straight Skive Type

Wire Braid Fittings

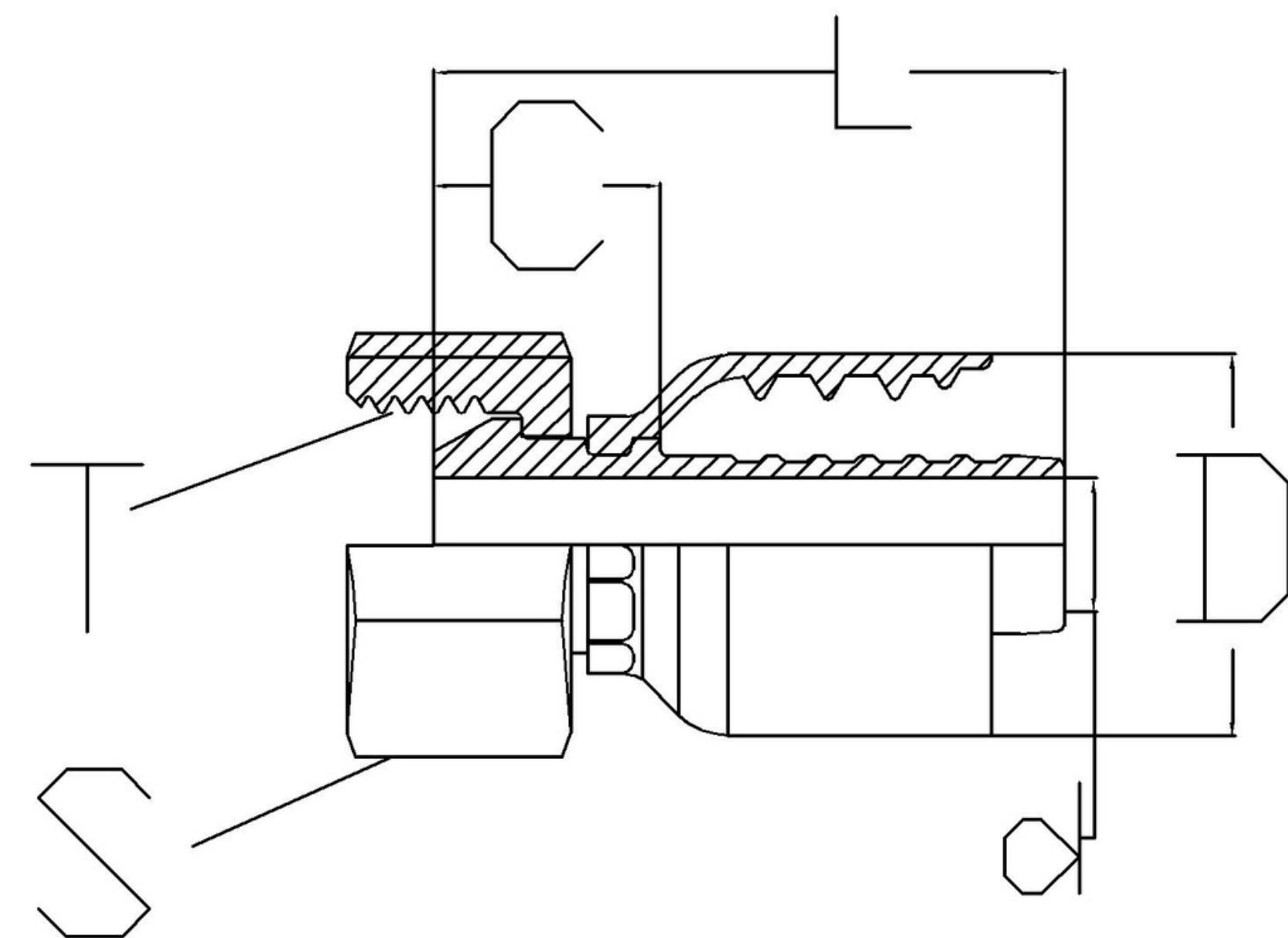
Standard - ISO 8434-6

Cone - 60°

O- Ring - NBR**

Used for hose type -

SAE 100 R1, R2, R16, R17,
R19, R7*, R6*, R4*, TEFLON*



DESCRIPTION	HOSE ID (DASH)	HOSE ID (inch)	Thread (T)	S	L	C	d	D
HW-2020-FB-SKIVE	20	1 - 1/4	1.1/4-11BSP	50	85	29	25	54
HW-2424-FB-SKIVE	24	1 - 1/2	1.1/2-11BSP	55	85	30	32	60
HW-3232-FB-SKIVE	32	2	2-11BSP	70	94	33	42	73
HW-4040-FB-SKIVE	40	2 - 1/2	2.1/2-11BSP	85	96	31	57	86
HW-4848-FB-SKIVE	48	3	3-11BSP	94	103	32	68	100

* To order fittings for R6, R7, R4 and Teflon hose, mention the hose type with part number
** If part number contains FBO, the fitting is with O-Ring and if it contains FB, it is without O-Ring

BSP Female 90 degree bend Skive type

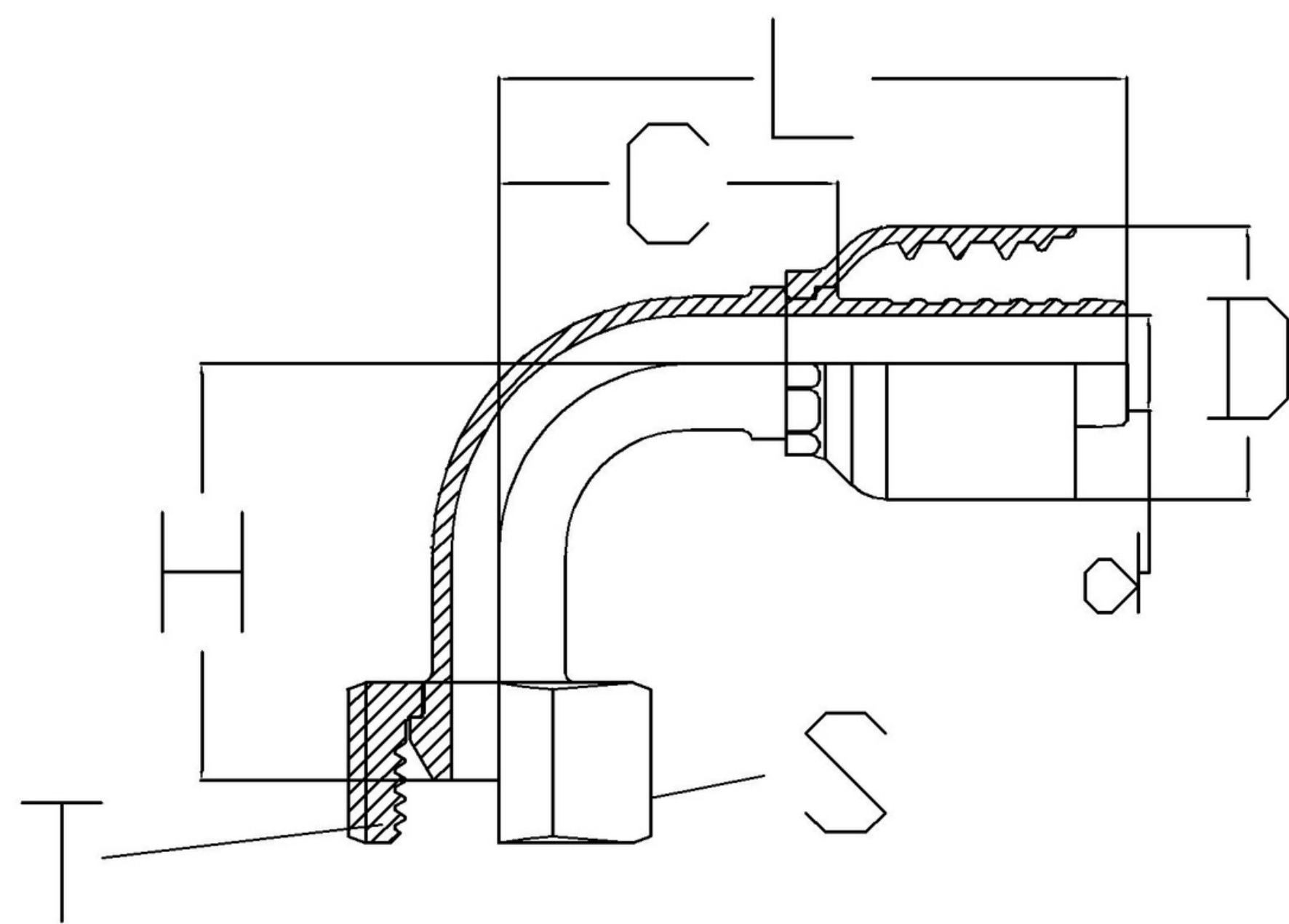
Standard - ISO 8434-6

Cone - 60°

O- Ring - NBR**

Used for hose type -

SAE 100 R1, R2, R16, R17,
R19, R7*, R6*, R4*, TEFLON*



DESCRIPTION	HOSE ID (DASH)	HOSE ID (inch)	Thread (T)	S	L	C	d	D	H
HW-2424-FB-90-100-SKIVE	24	1 - 1/2	1.1/2-11BSP	55	185	118	29	60	100
HW-3232-FB-90-130-SKIVE	32	2	2-11BSP	70	205	145	42	73	130
HW-4040-FB-90-96-SKIVE	40	2 - 1/2	2.1/2-11BSP	85	175	104	57	86	96
HW-4848-FB-90-100-SKIVE	48	3	3-11BSP	95	200	110	68	96	100

* To order fittings for R6, R7, R4 and Teflon hose, mention the hose type with part number
** If part number contains FBO, the fitting is with O-Ring and if it contains FB, it is without O-Ring